

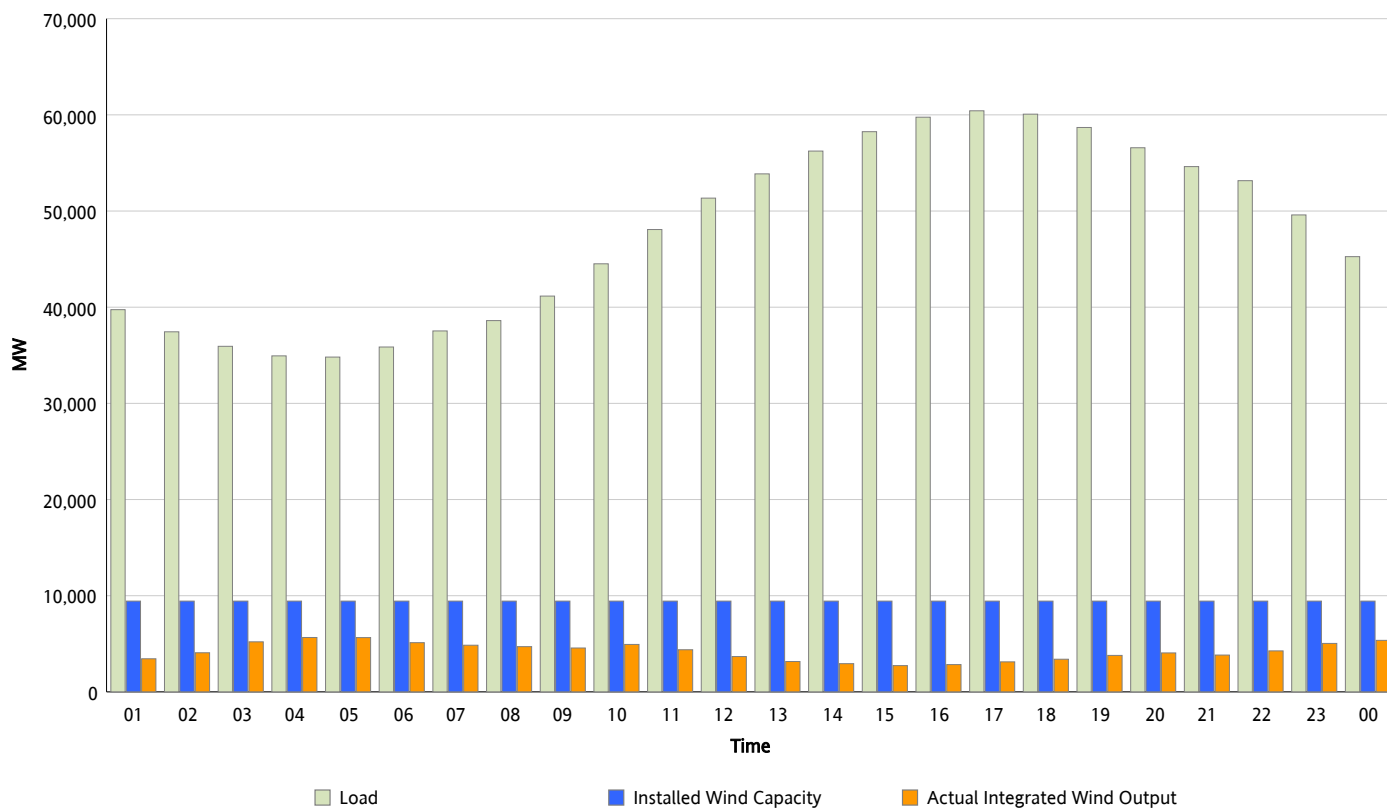


ERCOT Grid Operations

Wind Integration Report : 07/24/2012

Peak Load	60,424 MW
Load Peak Hour (HE)	17
Wind Over Peak	3,121 MW
Wind Record 06/19/12	8,368 MW
Max Wind Value*	5,798 MW
Wind Peak Time	04:09
Wind Integration %	16.66 %

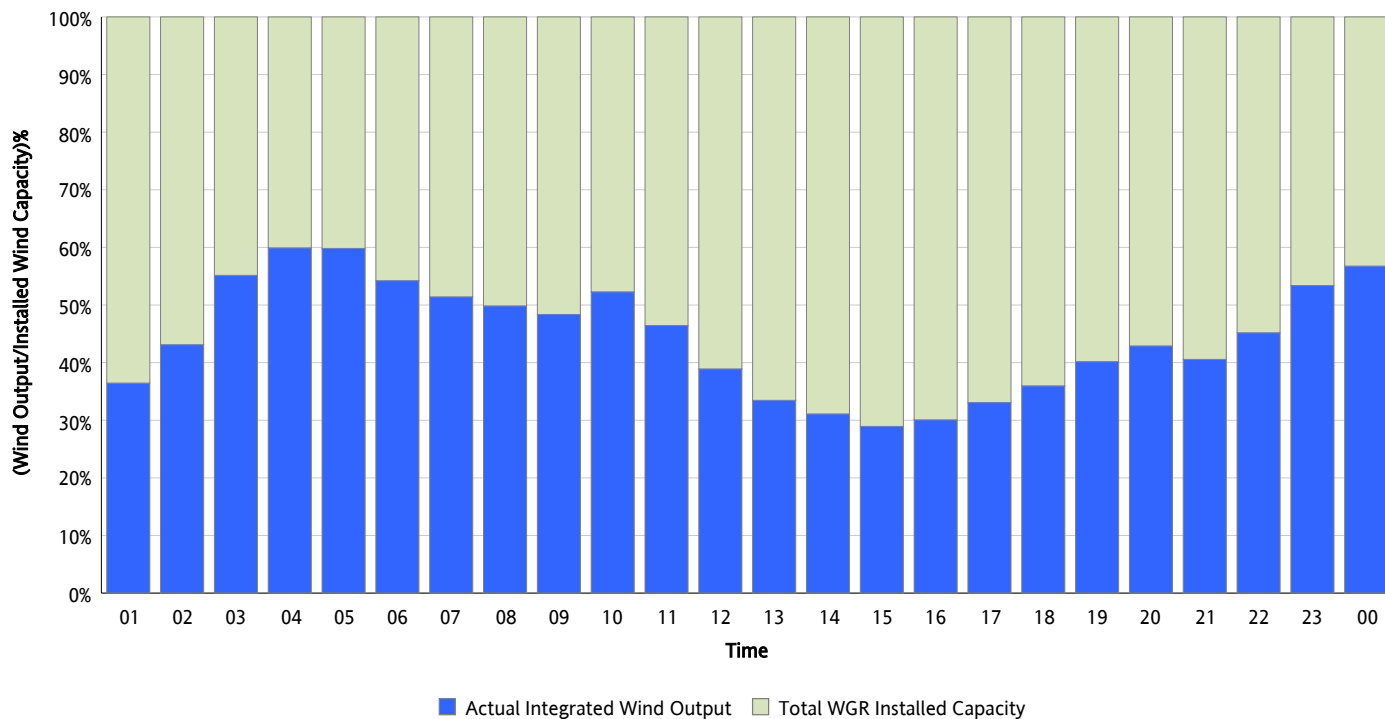
Hourly Average Actual Load vs. Actual Wind Output
07/24/2012



** Wind Record and Wind Max represent instantaneous values and the rest of the values are integrated over the hour*

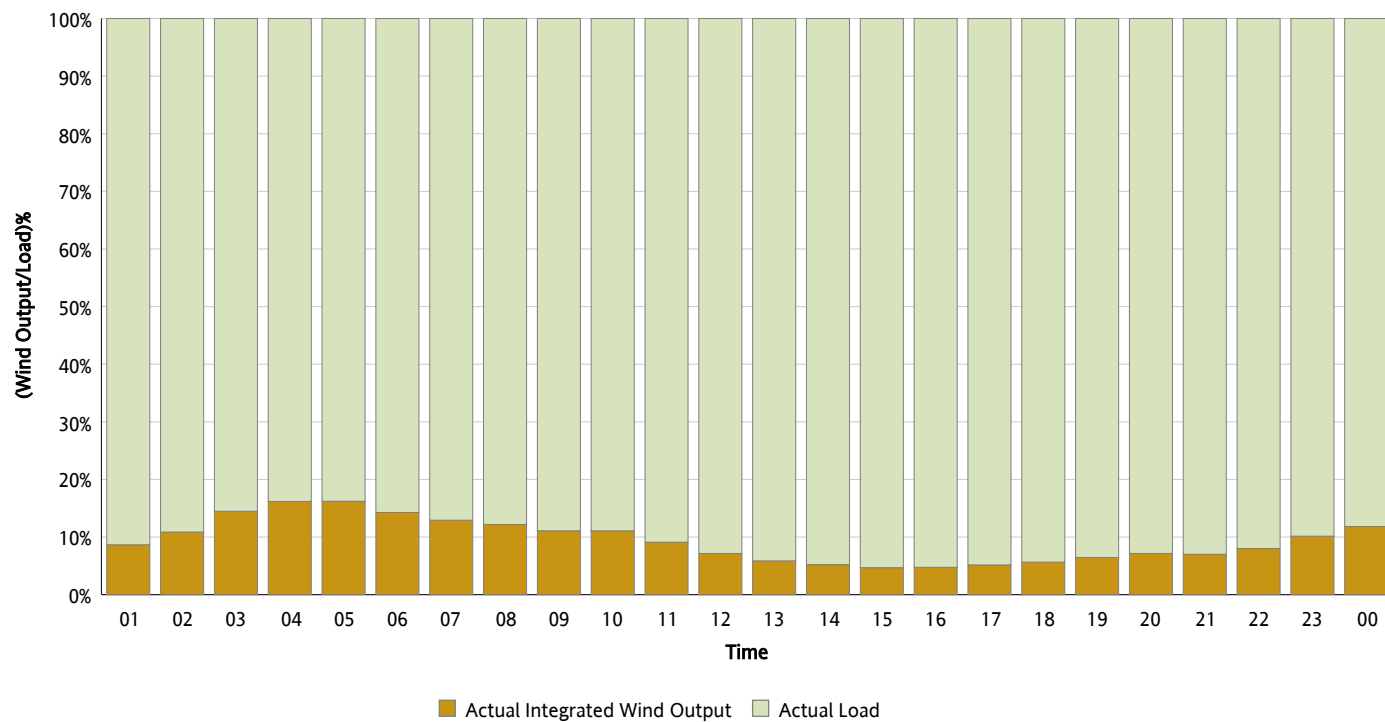
Actual Wind Output as a Percentage of the Total Installed Wind Capacity

07/24/2012



Actual Wind Output as a Percentage of the ERCOT Load

07/24/2012



ERCOT Load vs. Actual Wind Output

07/17/2012 - 07/24/2012

